

Madison County Agriculture News



Madison County Extension
184 NW College Loop * Madison * FL * 32340
850-973-4138

The Foundation for The Gator Nation
An Equal Opportunity Institution
<http://madison.ifas.ufl.edu>

A note from your Agent . . .

Summer heat and humidity is here so please keep hydrated with plenty of water. The office will be closed on Friday, July 3rd in observance of Independence Day. I hope you all have a safe and happy 4th of July.

Birds

Shorebird migration starts in mid July, peaking in August.

Look out for nesting Shorebirds, and keep your vehicles and dogs from disturbing them.

Swallow-Tailed kites begin gathering as do Purple Martins and Tree Swallows in preparation for migrating South for the winter.

Look for Frigate Birds flying overhead in South Florida.

Mammals

Baby Raccoons, Foxes, Armadillos, Possums, and Bobcats leave dens and begin following parents.

Deer mating season in the everglades.

Reptiles

Later this month young Alligators and Crocodiles will begin to hatch.

Insects

Mosquitoes and Chiggers are abundant, so watch out while you're camping.

Plants

Sea Oats flower along the Atlantic.

Scrub Morning Glory and Butterfly Weed begin to bloom.

Sincerely,

July 2009

Inside This Issue:

Beef Management Tips

Lawn and Garden Tips

Herbicide Updates

2009 Hay Field Day

Conservation
Opportunities

Small Farms Alternative
Enterprises Conference

Events To Remember...More Detail Inside About Events

June 2009:

Tuesday 30th - Hay Field Day

July 2009

Wednesday 22nd - Tax Savings and Conservation Opportunities for
Agricultural Lands Seminar

August 2009:

Saturday 1st-Sunday 2nd - Small Farms Alternative Enterprises
Conference

For meetings sponsored by Madison County Extension Office: Individuals with disabilities requiring special accommodations, please call 850-973-4138 at least five (5) working days before the meeting, so proper consideration can be given the request.

Products or plant varieties mentioned in this newsletter are for informational purposes only, and should not be construed as an endorsement, or guarantee, or to exclude similarly labeled, or appropriate products, or adapted plant varieties.

The Institute of Food and Agricultural Sciences (IFAS) is an Equal Employment Opportunity - Affirmative Action Employer authorized to provide research, educational information and other services only to individuals and institutions that function with non-discrimination with respect to race, creed, color, religion, age, disability, sex, sexual orientation, marital status, national origin, political opinions or affiliations. U.S. Department of Agriculture, Cooperative Extension Service, University of Florida IFAS, Florida A&M University Cooperative Extension Program, and Board of County Commissioners.

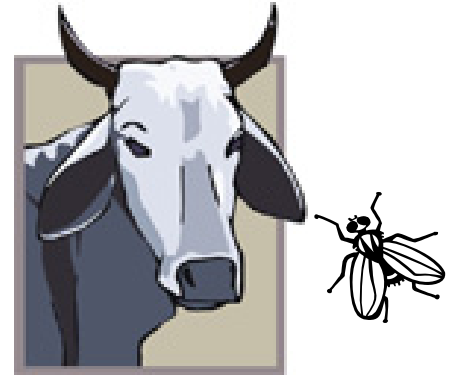
Beef Management Tips

- ⤴ Control weeds in summer pastures.
- ⤴ Apply nitrogen to warm season pastures, if needed.
- ⤴ Check pastures and hay fields for mole crickets and army worms. Treat if necessary.
- ⤴ Check dust bags
- ⤴ Check water and mineral feeders

often. Plenty of clear water is critical in summer. At 90 degrees Fahrenheit, a mature cow nursing a calf drinks about 17 gallons of water a day.

- ⤴ Watch for evidence of pinkeye and treat.
- ⤴ Update market information and plans.
- ⤴ Continue fly control. Watch fly

numbers; as tags get old, you may need to begin spraying or use back rubs.



Lawn and Garden Tips

Annuals that can take full sun during the increasingly hot summer months include:

- Celosia
- Coleus
- Torenia
- Ornamental Peppers

Some bulbs that can be planted during the middle of summer include:

- Butterfly Lily
- Gladiolus
- Society Garlic

Vegetables to plant this month as long as watering is provided during the dry spells:

- Watermelon
- Peppers
- Okra
- Southern Peas
- Eggplant

Lawn pests can be a problem this time of year. Don't forget to check your lawn often.

Many of the new cultivars of peaches and nectarines grow well in North Florida. Newly planted trees should be fertilized now; apply 1/2 pound per tree of 8-8-8 fertilizer.



Herbicide Updates

- GrazonNext is a new addition to our pasture herbicide portfolio. Dow Agrosiences has introduced GrazonNext as a means to phase out the use of Grazon P+D. GrazonNext is exactly the same herbicide as Forefront but at a cheaper rate. Check with your supplier for current prices.
- Cleanwave is another newer product and is recommended for prickly pear with a broadcast application.
- Milestone is very effective in controlling thistle at all growth stages.
- Telar is a slow acting herbicide that is very cost effective in controlling blackberries.
- Application of Cleanwave and Telar are most effective when done in the fall.



2009 Hay Field Day - Tuesday, June 30, 2009, Wellborn, Florida at 9:00AM

On June 30th at Mark Randell Farms in Wellborn, Florida the Northeast Florida Beef and Forage Group will be having their 2009 Hay Field Day.

Registration Fee is \$5.00 per person.

To register contact your local County Agent, Dan Fenneman at 973-4138 or the Suwannee County Extension Office at 386-362-2771 before June 26, 2009.

Session Topics:

- Efficient Use of Fertilizers
- Weed Control Update
- Marketing Hay

- Summer Legumes: Production and Weed Control
- Weather Forecasts
- Calculating Dry Matter Forage in your Pasture

12:00-12:45pm	Lunch
1:00-3:00pm	Field Demonstration
3:00pm	Adjourn

*CEU's and CCA's will be available

Program:

8:15-9:00am	Registration
9:00-9:05am	Welcome and Introductions
9:05-9:30am	Weed Control Update
9:30-9:55am	Hay Marketing
10:00-10:25am	Session 1
10:30-10:55am	Session 2
11:00-11:25am	Session 3
11:30-11:55am	Session 4



Tax Savings and Conservation Opportunities for Agricultural Lands Wednesday, July 22, 2009 - Tallahassee, Florida at 9:00 AM

A Seminar for Landowners, Professionals, and Interested Citizens.

Located at the Leon County Agricultural Center (IFAS Extension Office), 615 Paul Russell Road, Tallahassee, Florida (local contact—Will Sheftall 229-224-8470)

Seminar Topics:

- Basics of Conservation Easements
- Conservation Easement Appraisals

- Asset Protection/Wealth Preservation
- Protect your farm or ranch from estate taxes
- Income, estate and property tax incentives for qualifying landowners

- Tall Timbers Research Station and Land Conservancy
- UF-IFAS Cooperative Extension

All RSVP's to:

Ellen at 352-327-1769 or
Ellen@conserveflorida.org

Seminar Hosts:

- Conservation Trust for Florida, Inc. PO Box 134, Micanopy, Florida 32677
Phone: 352-466-1178
Website: www.conserveflorida.org
Email: info@conserveflorida.org

\$10 program cost at the door (lunch, refreshments, materials)



Small Farms Alternative Enterprises Conference - August 1st and 2nd

“Sustaining Small Farms; Strengthening Florida’s Communities”, Osceola Heritage Park, Kissimmee, Florida

Workshop Topics:

- Business/Marketing
- Policy/Regulations
- Small Ruminants/Livestock
- Alternative Energy
- Organic and Sustainable

- Production
 - Horticulture
- Including:**
- National Keynote Speaker - John Ikerd
 - Featured Speaker - Charles Bronson
 - Air Conditioned Livestock Arena
 - Network with other Small

- Farmers
 - Local Foods Featured
 - Space for Over 100 Exhibitors
- For more information visit:**
<http://smallfarms.ifas.ufl.edu>

