

Madison County Agriculture News



Madison County Extension
184 NW College Loop * Madison * FL * 32340
850-973-4138

The Foundation for The Gator Nation
An Equal Opportunity Institution
<http://madison.ifas.ufl.edu>

A note from your Agent . . .

This is the time of year to have a leaf sample analysis for pecan trees done. Detailed instructions are included in this newsletter.

Birds

First flocks of Blue-Winged and Green-Winged Teal arrive to winter on Florida lakes and wetlands.

Yellow Warble migration begins.

Mammals

Two-year old Black Bear cubs will wean from their mothers.

Short-Tailed Shrews will begin a second round of breeding for the year.

Reptiles

Young Sea Turtles are hatching so watch where you're walking

Insects

Thousands of Great Southern White Butterflies can be seen migrating through coastal areas.

Invertebrates

Corals along the Keys spawn at the full moon.

Sincerely,

August 2009

Inside This Issue:

Beef Management Tips

Lawn and Garden Tips

Pecan Tree Analysis

USDA Statistics

Hamilton County Fair

Corn and Peanut Twilight Tour

Managing Wildlife and Habitat: A Hunters Guide

John Deere Field Day and Demo

2009 Annual Peanut Field Day

Fifth Saturday Farmers & Friends Festival

Events To Remember...More Detail Inside About Events

August 2009:

Saturday 1st-Sunday 2nd - Small Farms Alternative Enterprises Conference

Monday 3rd - Deadline for Hamilton County Fair Swine Show

Tuesday 4th - Grain Corn/Peanut BMP Twilight Tour

Saturday 8th - Managing Wildlife and Habitat: A Hunters Guide

Wednesday 12th - Field Day and Demo of the John Deere Slash Bundler

Thursday 20th - Annual Peanut Field Day

Saturday 29th - Fifth Saturday Farmers & Friends Festival

For meetings sponsored by Madison County Extension Office: Individuals with disabilities requiring special accommodations, please call 850-973-4138 at least five (5) working days before the meeting, so proper consideration can be given the request.

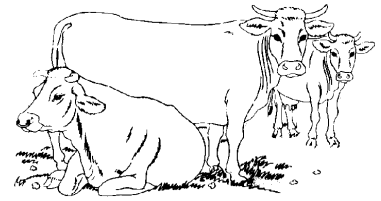
Products or plant varieties mentioned in this newsletter are for informational purposes only, and should not be construed as an endorsement, or guarantee, or to exclude similarly labeled, or appropriate products, or adapted plant varieties.

The Institute of Food and Agricultural Sciences (IFAS) is an Equal Employment Opportunity - Affirmative Action Employer authorized to provide research, educational information and other services only to individuals and institutions that function with non-discrimination with respect to race, creed, color, religion, age, disability, sex, sexual orientation, marital status, national origin, political opinions or affiliations. U.S. Department of Agriculture, Cooperative Extension Service, University of Florida IFAS, Florida A&M University Cooperative Extension Program, and Board of County Commissioners.

Beef Management Tips

- ▲ Apply lime for fall and winter crops if needed.
- ▲ Harvest Bahia-grass seed.
- ▲ Check for worms, spittlebugs, and mole crickets, and treat if necessary.
- ▲ Treat for liver flukes as close to August 15th as possible, if they are in your area.
- ▲ If cattle grubs were found on cattle last winter or heel flies were observed in the pasture, treat for cattle grubs this month.
- ▲ Check dust bags.
- ▲ Check mineral feeders.
- ▲ Wean calves and cull cow herd.
- ▲ Observe animals regularly for signs of disease.

- ▲ Pregnancy test and cull open heifers from replacement herd.
- ▲ Update market information and marketing plans.



Lawn and Garden Tips

More tolerant vegetables to plant include:

- Snap Beans
- Pole Beans
- Lima Beans
- Broccoli
- Cauliflower
- Collards
- Corn
- Cucumber
- Bunching onions
- Southern Peas
- Peppers
- Pumpkin
- Turnips
- Watermelons

Tender vegetables to plant early in the month:

- Beans
- Eggplant
- Peppers
- Squash
- Tomatoes

Herbs that can be planted from plants are:

- Bay Laurel
- Ginger
- Mexican Tarragon
- Rosemary

Bedding plants can include:

- Melampodium

- Salvias
- Torenia
- Coleus

Check lawns frequently for damaged areas and keep insects in check with early treatments.

Pinch back poinsettias and mums before the end of the month to allow time for buds to form for winter blooms.



Pecan Leaf Sampling

UF/IFAS Extension Soil Testing Laboratory runs a Leaf Sample Analysis for Pecans. The sample fee is \$10 per sample. Plant tissue analysis includes: N, P, K, Ca and Mg (in percent) and B, Cu, FE, Mn and Zn (in parts per million). Pecan samples may be submitted by growers. It is suggested that you use both leaf tissue and soil samples to guide decisions about fertilization of managed orchards.

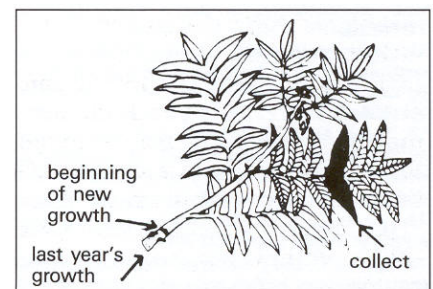
Collect samples between mid July and late August. **Collect 100 middle pairs of leaflets from the middle leaf** of this year's growth. Use terminal shoots exposed to the sun. Avoid leaflets from twigs from

the interior of the tree's canopy. Collect leaflets from all sides of the tree. Do not sample leaflets contaminated with soil or sprays. Do not sample leaflets damaged by disease and insects and mechanically damaged leaflets. Take leaflets around the tree up to heights that can be reached conveniently. Sample trees of different varieties, different ages and different management history separately. Collect from a number of representative trees. Abnormal trees or trees that are not representative of the area should be sampled separately.

Allow samples to air dry for 3-4

days, then place in a paper bag or manila envelope.

Contact the Madison County Extension Office for the Plant Tissue Test Information Sheet and for shipping instructions. You can also download the PDF Tissue Test Information Sheet from our website. If you have any questions please contact Dan Fenneman.



USDA National Agricultural Statistics

CORN:

Corn planted for all purpose totaled 75,000 acres and the acreage to be harvested for grain is estimated at 42,000 acres.

COTTON:

Planted cotton acreage is projected at 65,000 acres, down three percent from last year's 67,000 acres planted.

ALL HAY:

Acreage of all types of hay,

cut and to be cut is estimated at 300,000 acres, unchanged from last year.

PEANUTS:

Planted acreage of peanuts is estimated at 120,000 acres, with 110,000 acres expected to be harvested for dry nuts.

SOYBEANS:

Planted acres of soybeans are estimated at 30,000 acres, with 27,000 acres expected to be harvested.

SUGARCANE:

Producers expect to harvest 393,000 acres for the 2009-2010 season, down two percent from last year.

WHEAT:

Wheat planted is estimated at 17,000 acres and the acreage to be harvested is projected at 15,000 acres.



Hamilton County Fair Swine Show & Sale

The Hamilton County Fair Swine Show & Sale will be held on Thursday, October 1, 2009. The swine check-in is from 8:00-10:00AM, the show starts at 2:00PM and the sale will begin at 7:00PM

The deadline to own your pig and have your entry form turned into the Hamilton County Extension Office is **MONDAY, AUGUST 3, 2009 by 4:30PM.** (Forms are available at the Madison County Extension Office as well as the

Hamilton County Extension Office)

If you have any questions, contact the Hamilton County Extension Office at 386-792-1276.



Corn and Peanut Growers Twilight Tour - Tuesday, August 4th

On August 4th at the North Florida Research Education Center in Live Oak the Twilight Tour will include the following steps:

- Bahiagrass Rotation
- Strip-till peanuts into high biomass cover crop
- Nine new peanut varieties
- Corn seeding rate demonstration (24-40,000 seeds/acre)

• Corn nitrogen rate trials (90-270 lbs N/acre)

- Low input corn production
- Weed control strategies

Registration will start at 5:00PM with a Brisket Supper starting at 5:30PM sponsored by Bayer Cropscience.

There will be 2 CEUs for

Pesticide Applicators and 2 CCA credits will be available.

Please RSVP to Lafayette County Extension for meal planning at 386-294-1279.



Managing Wildlife & Habitat: A Hunters Guide - Saturday, August 8, 2009

On Saturday, August 8, 2009 from 9:00AM to 12:00PM at the South Prong Plantation in Baker County will be having a guided tour. The guided tour will be of 2,400 acres that are actively managed for wildlife improvement.

Topics will include:

- Wildlife health
- Food plot establishment
- Maintenance

Tour will be guided by:

- Land Managers
- Wildlife Biologists
- University Faculty

Tour will start at 9:00AM with an introduction by Doug Moore from South Prong Plantation.

A lunch served at 12:00PM sponsored by Farm Credit of North Florida.

Please call (904) 387-8850 for questions and to **RSVP** which is **REQUIRED.**



John Deere Field Day and Demo - Wednesday, August 12, 2009

WHAT:

A Field Day and Demo of the John Deere Slash Bundler sponsored by the North Central Florida Renewable and the Suwannee River RC&D Councils

WHERE:

Suwannee County

WHEN:

August 12, 2009, at 9:00AM
(August 13 if rained out)

WHY:

Waste wood supply stream needed for 3 woody biomass electricity facilities being built in the region: a 100 Mw Facility in Gainesville, A 40 Mw Facility in Jefferson County and A 8 Mw Facility in Ocala.

HOW:

The John Deere 1490 D Slash Bundler has been modified at Auburn University under a grant from the USDA Forest Service. Bundles can be produced with logging debris, then air-dried and processed for use in gasifiers and boilers.

STORY:

Waste wood is an abundant resource in the Southeast. It exists in the form of urban tree debris, logging debris and land clearing debris. It also exists in the form of overstocked stands of small diameter trees that contribute to the risk of wildfire. In 2003 and 2007, two studies were conducted for the Gainesville Regional Utilities (owned

by the City of Gainesville) to determine how sustainable the waste wood stream would be within a 50-80 mile radius of Deerehaven it was found that waste wood alone, if efficiently harvested, would supply 60 MW of renewable energy in the form of bio-electricity.

For every MW of biomass energy, 4.9 jobs are projected. The task is to deliver waste wood that is dry enough and low cost enough for affordable and clean electricity. The modified 1490 D Slash Bundler will be brought to North Florida this summer thanks to Mike Schmidt, John Deere Corporation; the USDA Forest Service Research and Development Biomass Grant; Dana Mitchell, USDA Forest Service, Southern Research Station; and Tom Gallagher, Auburn University, School of Forestry and Wildlife Sciences. The Field Day is meant to bring us up to speed on the tremendously exciting new technology in all its facets. You are cordially invited to attend the morning Field Day at a site to be announced in Suwannee County and the lunch in Live Oak at noon. Tickets for lunch are available at the Field Day.

LUNCH PROGRAM:

We have invited U.S. Congressman Alan Boyd to open the public comments at the luncheon. We are also inviting FL House Speaker Larry Cretal to follow Alan with additional comments and finally we will be asking

the Governor's Energy Office to attend. Florida Senator Jim King of Jacksonville will also be extended and invitation as will US Congressman Cliff Stearns. In short, a "Team of Champions" is needed to promote the well-being of north-central and west Florida's towns and cities.

Because two RC&D Councils (15 counties) are combining efforts on this program, we have decided to announce a "Wood-to-Energy Outreach" to begin in each county as soon as funding is secured through the Florida Legislature for a modified bundler (approx. \$200K) and a small team of harvest and utilization specialist. The Biomass Ambassador's Guide, prepared mainly by UF, the state's land grant institution, will be the main tool for use in multiple seminars to be held over a 2 year period.

We hope to see you there! In the meantime, Good day!

Tom Cunilio and Doug Ulmer,
Coordinators RC&D Councils



2009 Peanut Field Day - August 20th

The Annual Peanut Field Day will be held at the Marianna North Florida Research and Education Center on Thursday, August 20, 2009 starting with registration at 8:00 AM (CDT). A tour of field studies will be held beginning at 8:30 AM. Topics to be addressed include disease and nematode control, new varieties, and other peanut production issues. A meal will be provided at noon. CEUs will be available at registration.

North Florida Research and Education Center is located seven miles north of Marianna on Highway 71 or one mile south of Greenwood.

For more information call
(850) 482-9904



Farmers & Friends Festival - August 29th

On August 29, 2009 from 8:00 AM to 3:00 PM the Madison Rotary Club is sponsoring the Farmers and Friends Fifth Saturday Festival.

This months show will include the following:

- Farmers Market
- Craft Show
- Classic and Antique Car Show
- BMX Bike Show

For more information on how to register please contact any of the Rotary Club Members and/or Ed Meggs at the Madison Community Bank

