

# Madison County Agriculture News



*Madison County Extension*  
184 NW College Loop \* Madison \* FL \* 32340  
850-973-4138

*The Foundation for The Gator Nation*  
An Equal Opportunity Institution

## New Agent In Town

**October 2008**

### Dear Friends and Families of Madison County and Surrounding Areas

My name is Dan Fenneman. My family moved to Madison in the early 70's; my wife Lisa and I have three children. I graduated from the University of Florida in 1985 with a BS in Ag Operations Management. I then started my career at Gold Kist Poultry in field operations which I worked there for eighteen years. Then I went to work for the Georgia Boil Weevil Eradication Program which I worked there for four years. I am honored to be the new Agriculture Extension Agent for Madison County and I look forward to meeting and working with you all. Together with the University of Florida's Institute of Food and Agriculture Sciences (IFAS) we can learn and solve the plant and animal issues we are faced with.

#### Inside this issue:

Beef Management	2
Lawn and Garden	2
Farm Field Day	3
Sunbelt Ag Expo	3
Carbon Credits	4
Ashley Farms	4

## Events To Remember...More Detail Inside About Events

### OCTOBER 2008:

**Thursday 9th** - Northeast Florida Small Farms Working Group Presents 'Alternative Livestock Production'

**Saturday 11th** - Suwannee County Farm Field Day

**Tuesday 14th—Thursday 16th** - Sunbelt Agricultural Exposition, Moultrie, Georgia

### NOVEMBER 2008:

**Thursday 6th** - Farm Bureau Carbon Credits

**Thursday 6th** - Forest Stewardship Program Property Tour "Ashley Farms"

**Saturday 8th** - Perennial Peanut Meeting

**Thursday 6th—Sunday 16th** - North Florida Fair, Tallahassee, FL

For meetings sponsored by Madison County Extension Office: Individuals with disabilities requiring special accommodations, please call 850-973-4138 at least five (5) working days before the meeting, so proper consideration can be given the request.

Products or plant varieties mentioned in this newsletter are for informational purposes only, and should not be construed as an endorsement, or guarantee, or to exclude similarly labeled, or appropriate products, or adapted plant varieties.

The Institute of Food and Agricultural Sciences (IFAS) is an Equal Employment Opportunity - Affirmative Action Employer authorized to provide research, educational information and other services only to individuals and institutions that function with non-discrimination with respect to race, creed, color, religion, age, disability, sex, sexual orientation, marital status, national origin, political opinions or affiliations. U.S. Department of Agriculture, Cooperative Extension Service, University of Florida IFAS, Florida A&M University Cooperative Extension Program, and Board of County Commissioners.

## Beef Management for October

Some things that you need to do prior to the winter months:

- Supplement as needed
- Keep mineral feeders full

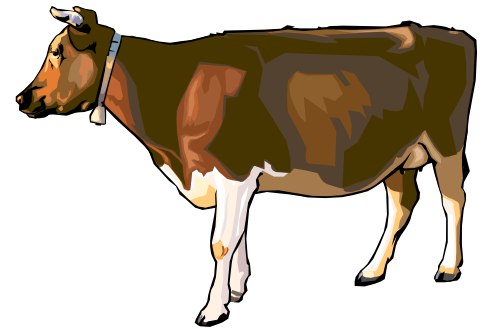
Preparing for winter grazing:

- Plan where to over-seed in pastures; graze these areas prior to planting

- Review winter feed supply and feeding plans

Recommended types of feed products:

- Corn
- Cottonseed



---

## Lawn and Garden



**Lawns** will start to lose their color as the weather starts getting cooler. Therefore if you want a greener lawn all winter long, try over seeding your lawn with annual ryegrass.

**Strawberries** do their best when planted during the months of September and October. One way to plant strawberries if you don't have room for a bed is to try planting them in some large containers round or rectangle. No matter how you plant them

make sure you provide daily water and sunshine until plants are established.

**Vegetables** to plant this month:

- ✓ Beets
- ✓ Brussels Sprouts
- ✓ Carrots
- ✓ Onions

**Herbs** to plant this month:

- ✓ Dill
- ✓ Fennel
- ✓ Oregano
- ✓ Sage

**Lilies** come in many different varieties that can be planted during the month of October that would provide blooms for next spring and

summer. For best results you would need to add an organic matter to the planting hole.

**Fall flower beds** should begin to be prepped as well as be planted during the fall months. Bedding plants that do good around here are:

- ✓ Shasta Daisy
- ✓ Petunias
- ✓ Digitalis (Foxglove)

If you know someone who would like to be added to our mailing list or if you would like to be taken off please let us know by calling the Madison County Extension Office. This and future news letters can be viewed at our web site <http://madaison.ifas.ufl.edu>

## Suwannee County Farm Field Day - October 11, 2008 from 9AM to 4PM

Sponsored By: Suwannee County Cattlemen Association and Florida Farm Bureau

Join us for a day of Professional Speakers, Demonstrations, Displays and Tour J&J Beefmaster working cattle ranch. Enjoy lunch sponsored by Dan Buchanan, Farm Bureau.

### PRODUCTION:

- ◆ Herd Health - Tracey Daniels DVM
- ◆ SCCA Chute and Scale - Tom Cashmore
- ◆ Bull Testing and AI information - Southeastern Semen Services, Scott Randall
- ◆ Pasture Grasses and Management - North Florida Research Center, Ann Blount
- ◆ Livestock management - Suwannee County Ag Agent, Elena Toro
- ◆ No Till Equipment - RC&D, Doug Elmore
- ◆ Nutrition for Growing Calves - Howland Feed, Blain Peerson
- ◆ Pasture to Plate - Publix, Joe Jordan
- ◆ Mineral Program - Fanners Cooperative, Barry Long

- ◆ Marketing your product - Columbia Livestock , John Willis

### FINANCIAL ASSISTANCE:

- ◆ NRCS Programs - Chris Menhennett
- ◆ Farm Credit Options - Farm Service Agency, Don Burnam
- ◆ Farm Cost Share Programs - FI Dept of Ag, Joel Love

### LEGISLATION ISSUES:

- ◆ Green Belt Exemptions - Suwannee Property Appraiser, Lamar Jenkins
- ◆ Environmental & Property Rights - Florida Farm Bureau

Contact Joe Jordan for more information at 386-842-1116



### PURCHASE AND SALES:

- ◆ Cattle Breeds - Local Purebred Breeders



## Sunbelt Agricultural Exposition - October 14-16, 2008

### North America's Premier Farm Show™

An ag based trade show that was started in 1978 the Sunbelt Expo has established itself as North America's Premier Farm Show™. Whether you are a large acreage production farmer or a weekend lifestyle farmer the Expo is an event you don't want to miss. The Expo's unique site has 100 acres of exhibit area adjoining a 600-acre working research farm.

- 100 acres of static exhibit space / 600 acre working farm and field demo area
- 1200+ companies exhibit each year; 75% exhibitor return rate
- Meeting facilities available on site for exhibitors throughout the year
- 1000 acres of free parking

**OCTOBER 14-16, 2008**  
**OCTOBER 20-22, 2009**  
**MOULTRIE, GEORGIA**

### EXPO SECTIONS:

- Agribusiness
- Tractors and Farming Equipment
- Irrigation
- Precision Farming
- Beef Cattle
- Horses
- Dairy
- Poultry
- Sheep and Goats
- Alpacas
- Aquaculture / Fish Ponds
- Forestry
- American Small Farm Center
- ATV
- Automotive
- Antique Tractors and Equipment
- Lawn and Garden
- Electricity
- Propane Gas
- Hunting and Fishing
- Family Living

Educational, entertaining seminars and demonstrations offered in a variety of specialized areas including:

- Beef Cattle Management Seminars
- Equine Demonstrations and Seminars
- Goat and Sheep Health Seminars
- Alpaca Seminars
- Dairy Seminars
- Poultry Seminars
- Fish/Pond Management Seminars
- Electrical Safety Demonstrations
- American Grand Finals Stock Dog Trials
- Hunting and Fishing Demonstrations
- Family Living—Kitchen Craft Cooking Demonstrations
- Antique Tractor Parade

### SUNBELT AG EXPO

290-G Harper Blvd. • Moultrie, GA 31788  
 (229) 985-1968 • (229) 890-8518 fax  
 info@sunbeltexpo.com • www.sunbeltexpo.com

## Carbon Credits Meeting - November 6, 2008 @ 6:30PM

### Carbon Credits what are they?

#### How do they work?

#### Is this something I can use for extra money?

To find out more and have these questions answered plan on attending on **Thursday, November 6, 2008 at 6:30 PM** here at the **Madison County Extension Office**.

Sequestering or holding carbon helps reduce carbon dioxide, one

of several greenhouse gases contributing to the warming of the atmosphere.

Research shows that trees are very good at taking atmospheric carbon and converting it to a sequestered, stable form of carbon within the tree. Trees can sequester from one to several tons of carbon dioxide per acre during their optimal growth phases.

Carbon Credit programs allow companies to purchase credits to

offset a portion of their greenhouse gas emissions.

Please **REGISTER** by **October 31, 2008** by calling the Madison County Extension Office at 850-973-4138.

We are planning to provide a meal that is sponsored by the Florida Farm Bureau.



## Property Tour: Ashley Farms - November 6, 2008

### Stewardship Property of Don Ashley 2007 Forest Stewardship Landowner of the Year Madison County, FL

**Date:** Thursday, November 6, 2008; meet at 9:00 AM ET, tour will begin promptly at 9:30

**Activity:** Ashley Farms is a unique mix of natural and planted pines and hardwoods, agricultural fields, wildlife openings, ponds and a lake. Don Ashley's multiple use objectives for the property are to incorporate timber, wildlife habitat, soil and water conservation, recreation, and aesthetics. Timber management on the property is based in sound forest management planning and practices, and provides a sustained income from the sale of forest products. Wildlife management is targeted for game species such as quail, turkey, waterfowl and whitetail deer; but

many non-game birds and mammals also benefit from wildlife and timber management activities. With downtown Madison only about two miles away and two major State Highways on the south and east borders, prescribed burning on this property is a challenge, but essential to improving wildlife habitat and decreasing wildfire hazards. Carefully planned prescribed fire and commercial thinning are used to open up areas of dense pine and hardwoods to allow sunlight to reach the understory and promote new vegetation for wildlife. Join us for a tour of an exemplary property and landowner.

**Register:** A sponsored lunch will be served on-site after the tour, sponsors TBA. This program is free but you must preregister. Call the Madison County Extension Office at (850) 973-4138 to register. Attendance will be

limited so please register soon!

#### A Service Of:

- Florida Division of Forestry, Forest Stewardship Program
- Florida Fish and Wildlife Conservation Commission
- University of Florida, IFAS, School of Forest Resources and Conservation
- University of Florida, IFAS, Madison County Cooperative Extension Service
- Southern Forestry Consultants

Funding for Florida's Forest Stewardship Program is provided by the USDA Forest Service through the Florida Department of Agriculture and Consumer Services Division of Forestry and a grant from the Sustainable Forestry Initiative.

*Questions about this or other Forest Stewardship Program activities can be directed to Chris Demers at 352-846-2375 or email at edemers@ufl.edu*